

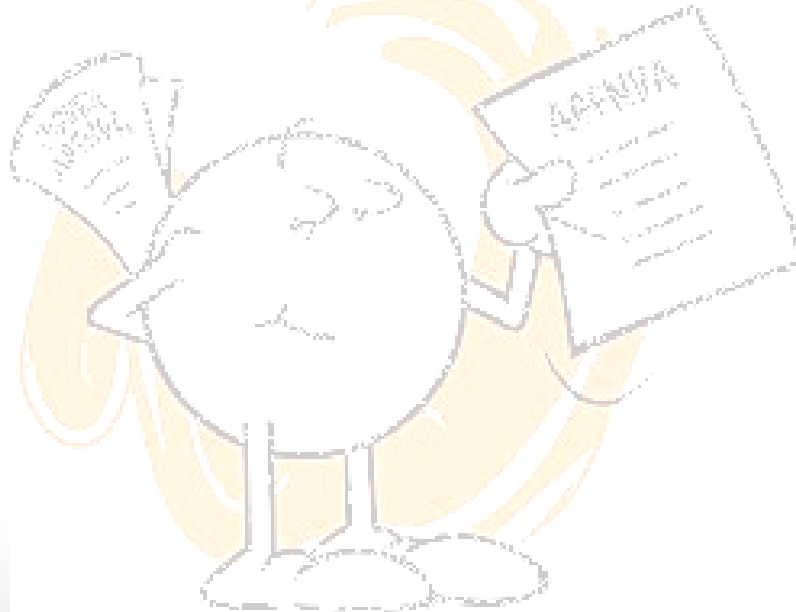
# Merge and Search

*A Preview of the VALID Project's Shared  
Online Catalog*



# Agenda

- **1** | VALID Project's Benefits and Deliverables
- **2** | Work-in-progress: Merge, Yet Preserve
- **3** | De-duping and Creating Composite Records
- **4** | Demo of the Shared Online Catalog
- **5** | Questions



# 1 | VALID Project's Benefits

- Reduce cost of library operations statewide
- Eliminate redundant purchasing
- Enable statewide academic library borrowers card
- Invest development dollars in NJ owned information infrastructure
- Foster development of NJ as “The Research State”
- Transform services for users



# 1 | VALID Project's Deliverables

- Transformative user experience combined with cutting edge consortial library management system
  - Eliminates redundant information with easy access to many more collections with a common bibliographic database
  - Allows for rapid customization to meet local needs with open-source/community-source software
  - Enables collaboration and provide new services with an integrated/shared system
  - Frees local IT staff for other priorities



## 2 | Work-in-Progress: Merge, Yet Preserve

- The VALID OLS Implementation Taskforce (VOIT) has centered on creation of a shared and merged database during FY2013
- VOIT members are:
  - Grace Agnew, Rutgers
  - Guy Dobson, Drew
  - Ann Hoang, NJIT
  - Chris Sterback, Rutgers
  - Kurt Wagner, WPU (*Chair*)
  - Yongming Wang, TCNJ



## 2 | Work-in-Progress: Merge, Yet Preserve

- Incorporates and involves the expertise of VALE Committee members to weigh in on critical issues
  - Bibliographic record rules and cleanup
    - *VALE Committee on Cataloging (BCMC)*
  - Collection management & analysis
    - *VALE Committee on Collection Management*
  - Consortial lending policy
    - *VALE Committee on Resource Sharing*
  - User display preferences
    - *VALE Committee on Reference Services*
- Putting VALE members' MARC records into a shared and merged catalog was a huge challenge



## 2 | Work-in-Progress: Merge, Yet Preserve

*Primary importance* has been to respect and preserve the unique information in our member libraries' records

100	1	a Whitman, Walt,  d 1819-1892.	<a href="http://www.validnj.org/vufind/Record/136497">http://www.validnj.org/vufind/Record/136497</a>
245	1 0	a Leaves of grass.	
260		a Brooklyn, New York :  b [Walt Whitman],  c 1855  e ([Brooklyn, New York :  f Rome Brothers])	
300		a xii, [13]-95 p., [1] leaf of plates :  b 1 port. ;  c 29 cm.	
500		a Author's name, Walter Whitman, appears in copyright statement on t.p. verso.  5 TCNJ	
500		a BAL and Myerson describe at least two issues, and various states of the copyright page, p. iv, frontispiece, and binding.  5 TCNJ	
510	4	a BAL  c 21395  5 TCNJ	
510	4	a Myerson, J. Whitman,  c p. 12-20  5 TCNJ	
500		a BAL and Myerson describe at least two issues and various states of the copyright page, p. iv, frontispiece, and binding.  5 Drew	
500		a Drew copy has copyright page in 2nd state; frontispiece and p. iv in 1st state; binding in BAL state A.  5 Drew	
500		a Verso of t.p. has in pencil, in the same hand, the names and addresses of Samuel Worcester Rowse and E.E. Clapp, and inscription "E.E.C to Chas Lehr - Philadelphia - Janry 24/13".  5 Drew	
510	4	a Myerson, J. Whitman,  c A2.1.a b1 s, p. 12-20  5 Drew	
590		a Gift of Norman Tomlinson (1 copy)  5 Drew	
500		a The portrait is printed on heavy plate paper.  5 Rutgers	
500		a The covers have gilt borders and the bck is decorated with ornaments stamped in gilt.  5 Rutgers	

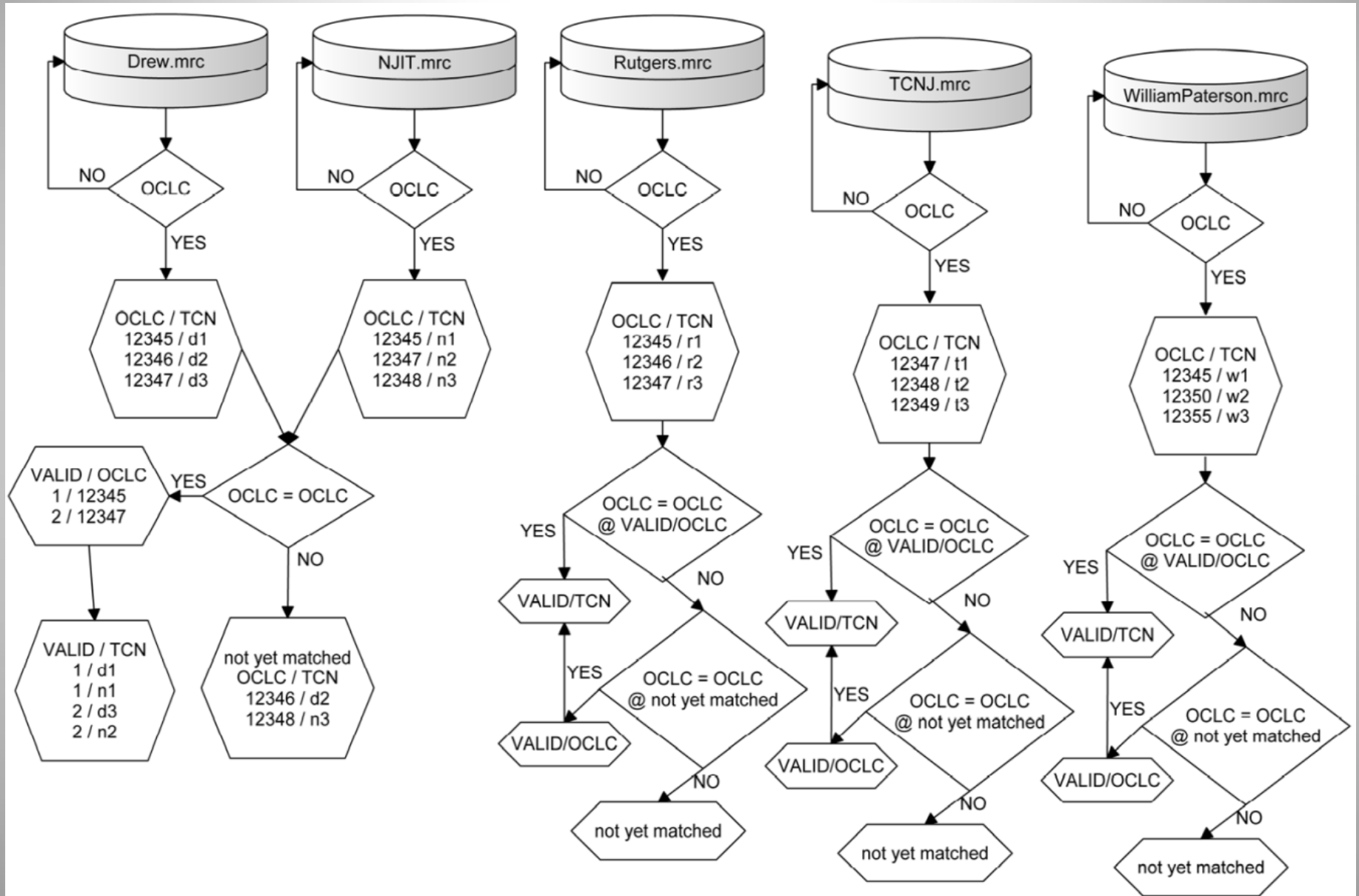
## 2 | Work-in-Progress: Merge, Yet Preserve

- Guy Dobson has spent a lot of time this year wrestling with these issues and has come up with some quite ingenious solutions.
- His old/new best friend is the camel!





# 3 | De-duping of MARC Records



# 3 | Tag Treatment for Bib Records

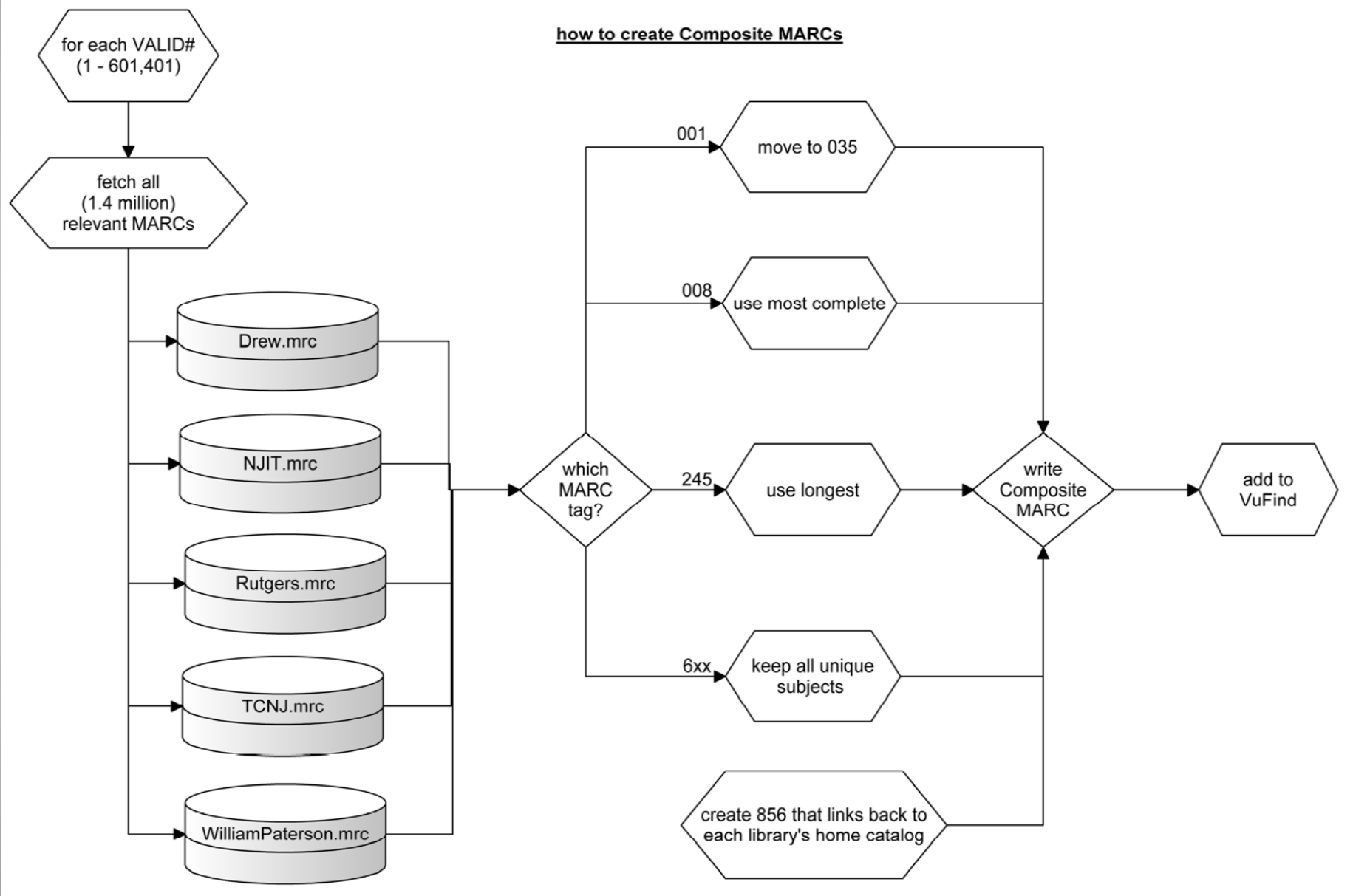
## Tag Treatment - Bibs

### Options:

1. If not found add it, only one tag from latest record kept, no dups, for non-repeatable fields.
2. All unique tag content is kept, all have \$5 added.
3. Same as #2, no \$5s added.
4. None kept, drop all occurrences.
5. None kept, move all occurrences to a different tags.
6. Use longest field.
7. Use most complete field (e.g., 008).

Tag	VALE	VALE notes
001	5	WPU: Move to 035 with institution prefix
003	4	
004	4	
005	4	TCNJ: may be useful GROUP: Machine Generated on import into new system
006	3	WPU: Something closer to choice 1, we need to preserve data added as the standards have changed.; TCNJ: conditional?; except kit "o", match 1st value and then keep most complete field; GROUP Byte by byte comparison. Take missing bytes, latest record resolves conflict.
007	3	WPU same as 006 above; TCNJ: may keep all if possible, may need some hierarchy when the field is equally complete with different codes; GROUP Hierarchy to determine format information.
008	7	1. Take the most complete field (the largest number of bytes coded); 2. Take the latest record if more than one record with the most complete field; 3. Add 008/15-17 if missing from the matching record (or the latest record if any conflict); 4. In 008/18-37, add coded bytes from the matching records (of the latest record if any conflict), except for the bytes listed next; 5. In the following byte ranges, added coded bytes from the matching records if not coded within the same range--Book 008/18-21, 24-27, Maps 008/18-21, 33-34, Music 008/24-29, 30-31, Continuing resources 008/25/27

# 3 | Creation of Composite MARCs



# 3 | By the Numbers

- **3.8 million** MARC records with OCLC numbers processed,
- **1.4 million** duplicate OCLC numbers found,
- **601,401 titles** with one or more owning libraries,
- **1,434 titles** owned by all five libraries.

Narrow Search	
<b>Library</b>	
Rutgers University (468742)	
Drew University (316310)	
The College of New Jersey (276589)	
William Paterson University (235925)	
New Jersey Institute of Technology (78506)	
<b>Institution</b>	
VALE VALID Project (601401)	
<b>Library</b>	
Alpha Libraries (601401)	
<b>Format</b>	
Book (454162)	
Electronic (120358)	
Journal (5884)	
Serial (5219)	
CD (2973)	
more ...	

<b>Library</b>	
Drew University ✓	
New Jersey Institute of Technology ✓	
Rutgers University ✓	
The College of New Jersey ✓	
William Paterson University ✓	
<b>Institution</b>	
VALE VALID Project (1434)	
<b>Library</b>	
Alpha Libraries ✓	
<b>Format</b>	
Book (1269)	
Journal (77)	
Microfilm (49)	
Serial (14)	
eBook (13)	

# Demo

<http://www.validnj.org/vufind>

# 4 | Search Example – Local Notes Preserved



Home > Leaves of grass > Holdings

[Cite this](#) [Text this](#) [Email this](#) [Export R](#)

### Leaves of grass.

Main Author: [Whitman, Walt, 1819-1892.](#)

Other Authors: [Tomlinson, Norman.](#)

Format: Book

Language: English

Published: Brooklyn, New York : [Walt Whitman], 1855

Subjects: [Rowse, Samuel Worcester, > 1822-1901.](#)  
[Lehr, Charles.](#)  
[Clapp, E. E.](#)

Online Access: [The College of New Jersey](#)  
[Drew University](#)  
[Rutgers University](#)

Tags: No Tags, Be the first to tag this record!

Holdings Description Comments StaffView

100	1	a Whitman, Walt,  d 1819-1892.
245	1 0	a Leaves of grass.
260		a Brooklyn, New York :  b [Walt Whitman],  c 1855  e ([Brooklyn, New York :  f Rome
300		a xii, [13]-95 p., [1] leaf of plates :  b 1 port. ;  c 29 cm.
500		a Author's name, Walter Whitman, appears in copyright statement on t.p. verso.  5 TCNJ
500		a BAL and Myerson describe at least two issues, and various states of the copyright page, p. iv, frontispiece, and binding.  5 TCNJ
510	4	a BAL  c 21395  5 TCNJ
510	4	a Myerson, J. Whitman,  c p. 12-20  5 TCNJ
500		a BAL and Myerson describe at least two issues and various states of the copyright page, p. iv, frontispiece, and binding.  5 Drew
500		a Drew copy has copyright page in 2nd state; frontispiece and p. iv in 1st state; binding in BAL state A.  5 Drew
500		a Verso of t.p. has in pencil, in the same hand, the names and addresses of Samuel Worcester Rowse and E.E. Clapp, and inscription Philadelphia - Janry 24/13".  5 Drew
510	4	a Myerson, J. Whitman,  c A2.1.a b1 s, p. 12-20  5 Drew
590		a Gift of Norman Tomlinson (1 copy)  5 Drew
500		a The portrait is printed on heavy plate paper.  5 Rutgers
500		a The covers have gilt borders and the bck is decorated with ornaments stamped in gilt.  5 Rutgers

# 4 | Search Example #2 – Owned by Alpha

[Home](#) > [Bulletin of the New Jersey...](#) > [Holdings](#)

[Cite this](#) [Text this](#) [Email this](#) [Export Record](#) [Add to Favorites](#)

## Bulletin of the New Jersey Academy of Science.

Corporate Author: [New Jersey Academy of Science.](#)

Format: **Journal**

Language: English

Published: New Brunswick, N.J. [etc.] New Jersey Academy of Science.

Subjects: [Science > Periodicals.](#)

Online Access: [New Jersey Institute of Technology](#)  
[William Paterson University](#)  
[Drew University](#)  
[The College of New Jersey](#)  
[Rutgers University](#)

Tags: No Tags, Be the first to tag this record!

### Similar Items

[Annals of the New York Academy of Sciences.](#)

[Proceedings of the National Academy of Sciences of the United States of America.](#)

[Daedalus : proceedings of the American Academy of Arts and Sciences.](#)

[E-bulletin program dates and deadlines /](#) Published (1998)

[Proceedings of the National Academy of Sciences of the United States of America.](#)

Holdings	Description	Comments	Staff View
856	<a href="http://librarius.njit.edu/web/vholdingsInfo?bibId=83936"> u http://librarius.njit.edu/web/vholdingsInfo?bibId=83936</a>  z New Jersey Institute of Technology		
856	<a href="https://chengfind.wpunj.edu/vufind/Record/214360"> u https://chengfind.wpunj.edu/vufind/Record/214360</a>  z William Paterson University		
856	<a href="https://librarycat.drew.edu/web2/tramp2.exe/do_keyword_search/guest&amp;setting_key=english&amp;servers=1home&amp;index=default&amp;*stype=simple&amp;query=ocm00834332"> u https://librarycat.drew.edu/web2/tramp2.exe/do_keyword_search/guest&amp;setting_key=english&amp;servers=1home&amp;index=default&amp;*stype=simple&amp;query=ocm00834332</a>  z Drew University		
856	<a href="http://libcat.tcnj.edu:7009/web/vholdingsInfo?bibId=321012"> u http://libcat.tcnj.edu:7009/web/vholdingsInfo?bibId=321012</a>  z The College of New Jersey		
856	<a href="https://www.iris.rutgers.edu/uh/bin/cgisirsi/0/0/0/123?searchdata1=ocm00834332"> u https://www.iris.rutgers.edu/uh/bin/cgisirsi/0/0/0/123?searchdata1=ocm00834332</a>  z Rutgers University		

<http://www.validnj.org/vufind/Record/12384>



# 4 | Search Example – eBook Owned by Alpha

 [Cite this](#)  [Text this](#)  [Email this](#)  [Export Record](#)  [Add to Favorites](#)

Science and security in a post 9/11 world a report based on regional discussions between the science and security communities /

Main Author: [Kammen, Michael G.](#)

Other Authors: [National Research Council \(U.S.\) Committee on a New Government-University Partnership for Science and Security](#), [National Research Council \(U.S.\) Committee on Science, Technology and Law Policy and Global Affairs.](#), [National Academies Press \(U.S.\)](#)



Local notes are preserved in 505 field tag

Format:  Electronic

Language: English

Published: Washington : National Academies Press, 2007

Subjects: [Science and state > United States](#), [National security > United States](#), [National characteristics, American](#), [United States > Civilization](#).

Online Access: [New Jersey Institute of Technology](#)

[William Paterson University](#)  
[Drew University](#)  
[The College of New Jersey](#)  
[Rutgers University](#)  
[Rutgers University](#)  
[Rutgers University](#)  
[Rutgers University](#)

Tags: No Tags, Be the first to tag this record!

505	0	ja Introduction-- Policies for openness and information control-- The internationalization of U.S. science and technology-- Biosecurity and dual-use research in the life sciences-- Research priorities-- Partnerships for science and technology-- Appendices. j5 NJIT
505	0	ja Biformity: A frame of reference, by M. Kammen.--A calculus for polarity, by L. W. Norris.--Reflections on identity, by E. H. Erikson.--Paradox and dream, by J. Steinbeck.--The land of contrasts, by J. F. Muirhead.--Black folk, by W. E. Burghardt Du Bois.--The American cast of mind, by R. B. Perry.--The paradox of success, by W. A. Clebsch.--Paleface and redskin, by P. Rahv.--A culture of contradictions, by R. Chase.--Fenimore the economic age, by M. Bewley.--The myth and the dialogue, by R. W. B. Lewis.--Venturous conservative: Tocqueville's image of the Democrat, by M. Meyers.--The Federalist, a split personality, by A. T. Mason.--S politicians in the American Civil War, by M. Cunliffe.--The American ideology, by R. G. McCloskey.--America and foreign policy, by G. A. Almond.--The ironic element in the American situation, by R. Niebuhr.--The nation a critique, by S. Hoff j5 WPU
505	0	ja Biformity: A frame of reference, by M. Kammen.--A calculus for polarity, by L. W. Norris.--Reflections on identity, by E. H. Erikson.--Paradox and dream, by J. Steinbeck.--The land of contrasts, by J. F. Muirhead.--Black folk, by W. E. Burghardt Du Bois.--The American cast of mind, by R. B. Perry.--The paradox of success, by W. A. Clebsch.--Paleface and redskin, by P. Rahv.--A culture of contradictions, by R. Chase.--Fenimore the economic age, by M. Bewley.--The myth and the dialogue, by R. W. B. Lewis.--Venturous conservative: Tocqueville's image of the Democrat, by M. Meyers.--The Federalist, a split personality, by A. T. Mason.--S politicians in the American Civil War, by M. Cunliffe.--The American ideology, by R. G. McCloskey.--America and foreign policy, by G. A. Almond.--The ironic element in the American situation, by R. Niebuhr.--The nation a critique, by S. Hoffman. j5 Drew

Holdings

Description

Table of Contents

Comments

Staff View



# Questions?

*Sharing the Common, Enabling the Unique*

